

Visionary Manhattan

by Habitat Magazine | Nov 6, 2019 | Design & Architecture, Featured (Slider), Send to Flipboard



location: Manhattan, NYC, USA | interior design: Nebihe Cihan Studio | images: Flexform New York

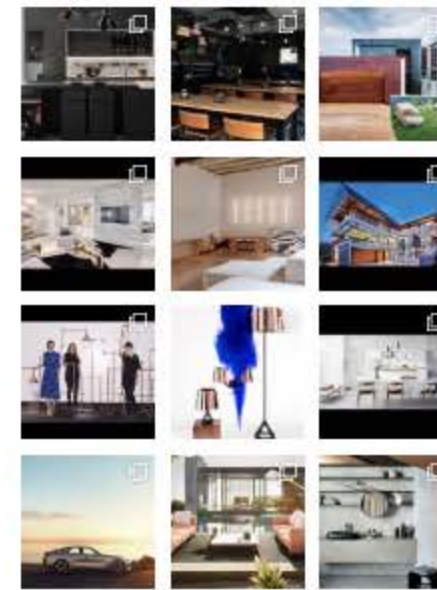
This property is a new build, in what is considered to be one of the most iconic structures in New York City. Located in the heart of Manhattan, between 56th and 57th street, 432 Park Avenue is the tallest residential tower in the western hemisphere. At 332 square metres, the penthouse comprises three bedrooms, plus three and a half bathrooms.



Rising to almost 427 metres, architect Rafael Vinoly choreographed the interior scene with four-metre high ceilings and vast, three-metre square windows that offer peerless views of New York City. These high ceilings and vast floorspace showcase an extensive art collection, including sculptures by British artists Sir Tony Cragg and Richard Deacon, paintings by Idris Khan and a neon installation by Welsh conceptual artist Cerith Wyn Evans.



Follow Habitat on Instagram



Load More...

Follow on Instagram

Follow Habitat on Facebook

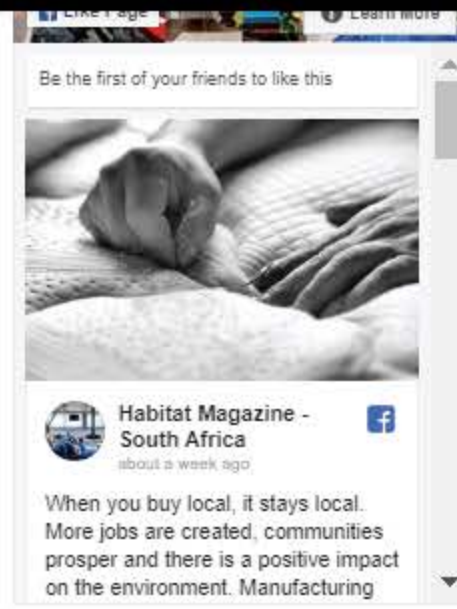


Be the first of your friends to like this





Pieces of such visual impact and artistic value called for a deliberate yet audacious hand at display. The interior design studio entrusted with the task was the renowned London-based firm Nebihe Cihan, who originated a minimalist concept in which the works of art are integrated throughout the interior spaces.



Say the designers: 'The client, an international businessman, is an avid art collector and this apartment is not his primary home. However, it was imperative that the spaces be comfortable – akin to a luxurious hotel – as he uses this primarily as a base for business trips.'



The brief was clear from an aesthetic point of view; to let the artwork take centre stage, almost as if these interior spaces were a gallery, yet with a slightly more intimate feel, and together we curated a selection of contemporary works. There is a calmness when entering an art museum and the client wanted to reflect this from the entrance to the apartment.





'There had to be a symbiosis between the artwork and the interiors. As a result, the chosen pieces set the tone for the interiors and add character with vivid touches of colour. We took care to select furnishings that complemented the artwork with neutral tones and rich finishes, yet not detract from them, nor the spectacular views.'



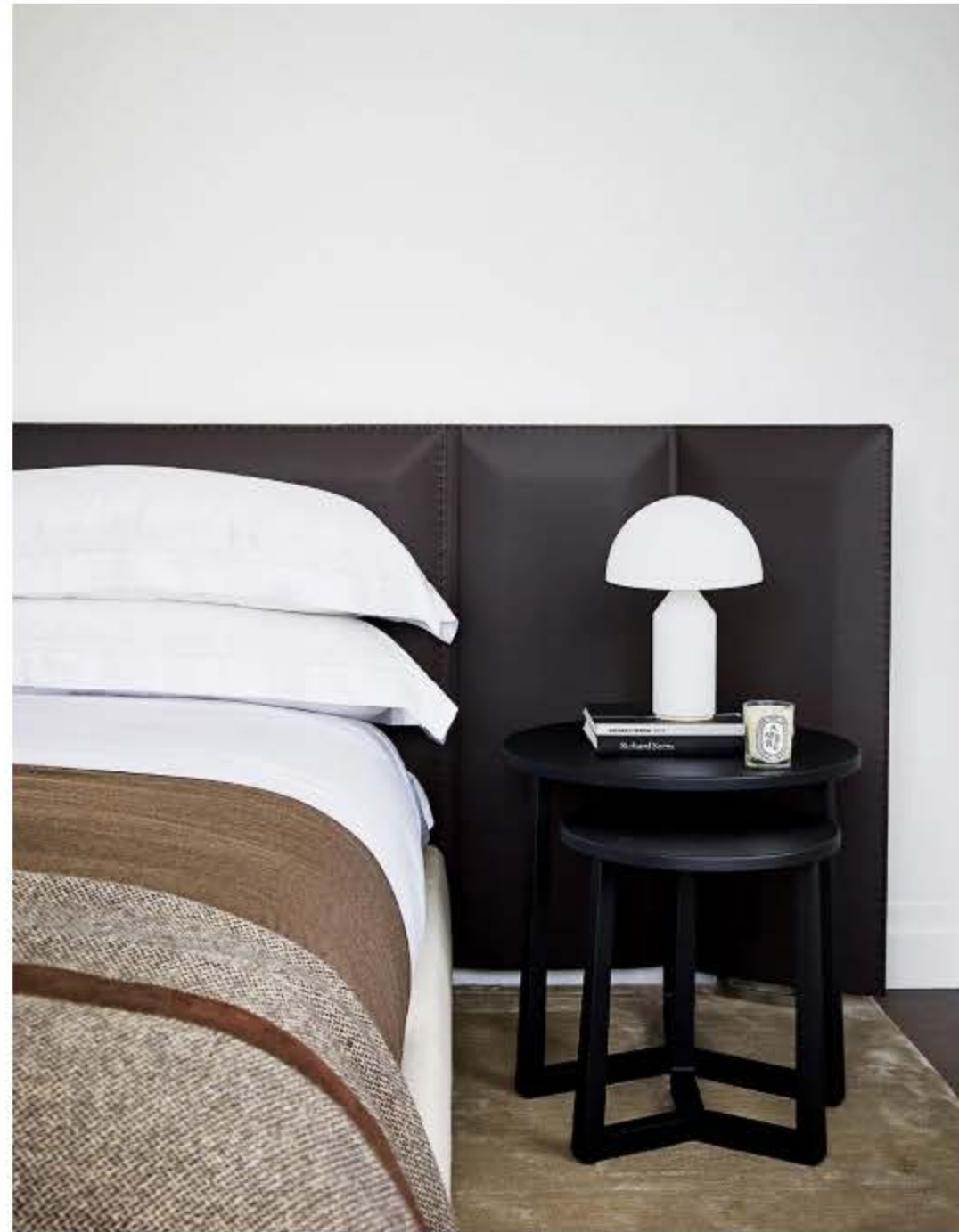
During the design process, the designers divided the living space into three sections: the casual seating area with a Flexform sofa, decorated with cashmere cushions, a formal living room featuring sensational views of Central Park, plus a dining area. The silk rugs, sourced from Holly Hunt, were hand-tufted in Nepal and customised to coordinate with the palette. Bed linen is by Frette, in keeping with the owner's desire for his home to feel like a luxurious hotel.

The designers add: 'Flexform are renowned for their upmarket contemporary pieces, which are both sculptural and comfortable. Having used their collections in previous residences, the client opted for these in this New York apartment.'



During the design process, the designers divided the living space into three sections: the casual seating area with a Flexform sofa, decorated with cashmere cushions, a formal living room featuring sensational views of Central Park, plus a dining area. The silk rugs, sourced from Holly Hunt, were hand-tufted in Nepal and customised to coordinate with the palette. Bed linen is by Frette, in keeping with the owner's desire for his home to feel like a luxurious hotel.

The designers add: 'Flexform are renowned for their upmarket contemporary pieces, which are both sculptural and comfortable. Having used their collections in previous residences, the client opted for these in this New York apartment.'



These user-friendly spaces are skilfully furnished and accessorised. This prominent, high-end Italian furniture manufacturer is known for the understated elegance of its contemporary designs by Antonio Citterio; and overall for its excellent artisanal craftsmanship.

Newsletter Sign Up

Share this:



Art Deco Pied-à-Terre

6th Sep 2019

In "Design & Architecture"



Axis of Symmetry

4th Sep 2018

In "Design & Architecture"



Windhoek Villa

8th Nov 2016

In "Design & Architecture"